

# FACULTY OF FURNITURE DESIGN & WOOD ENGINEERING

“The quest for  
academic excellence  
is a lifetime quest”



**FDMIL**



# Table of Content

Str. Universității nr. 1, 500068 Brașov, Romania  
(+40) 372 910 037  
f-dmil@unitbv.ro

online  
<https://dmil.unitbv.ro/ro/>

FACULTY PROFILE PRESENTATION

• **ABOUT FACULTY**

---

• **STUDY PROGRAMS**

---

• **RESEARCH CENTER & EXHIBITIONS**

---

• **PRO LIGNO JOURNAL**

---

• **INTERNATIONAL CONFERENCE**

---



**FDMIL**



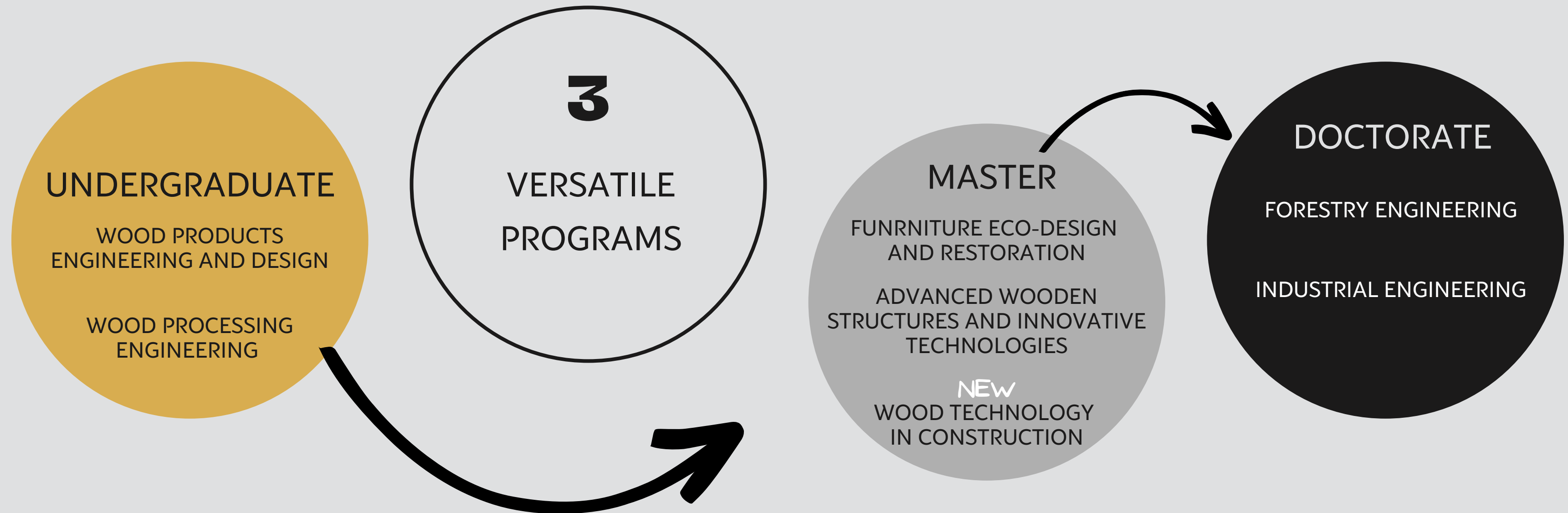
FACULTY PROFILE PRESENTATION

# About Faculty

Located in the green capital of Romania-Braşov, is the only faculty in Romania with furniture design and wood engineering profile with a tradition of over 60 years and with over 6700 graduate students.

[www.dmil.unitbv.ro](http://www.dmil.unitbv.ro)

Our faculty is preparing specialists for the industrial sector comprising 9400 companies and 110.000 employees which totalize a production value of over 3500 Mil. EURO.

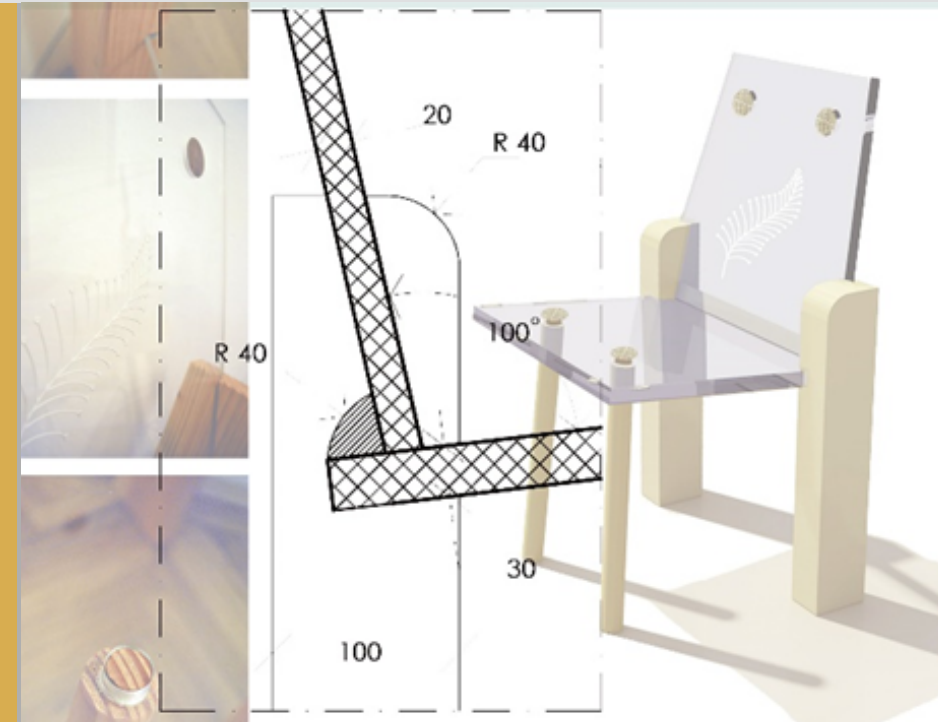


# Undergraduate Program

## Mission

### WOOD PRODUCTS ENGINEERING AND DESIGN

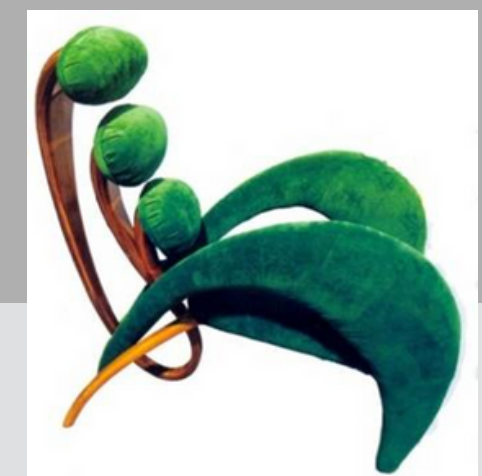
The mission of this study program is to train and specialize young people as design engineers in modern and art furniture as well as other wood products and in interior design and restoration. Accredited program, 4 years, 240 credits.



“CREATIVITY, INNOVATION, FLEXIBILITY IN DESIGN”



## Vision



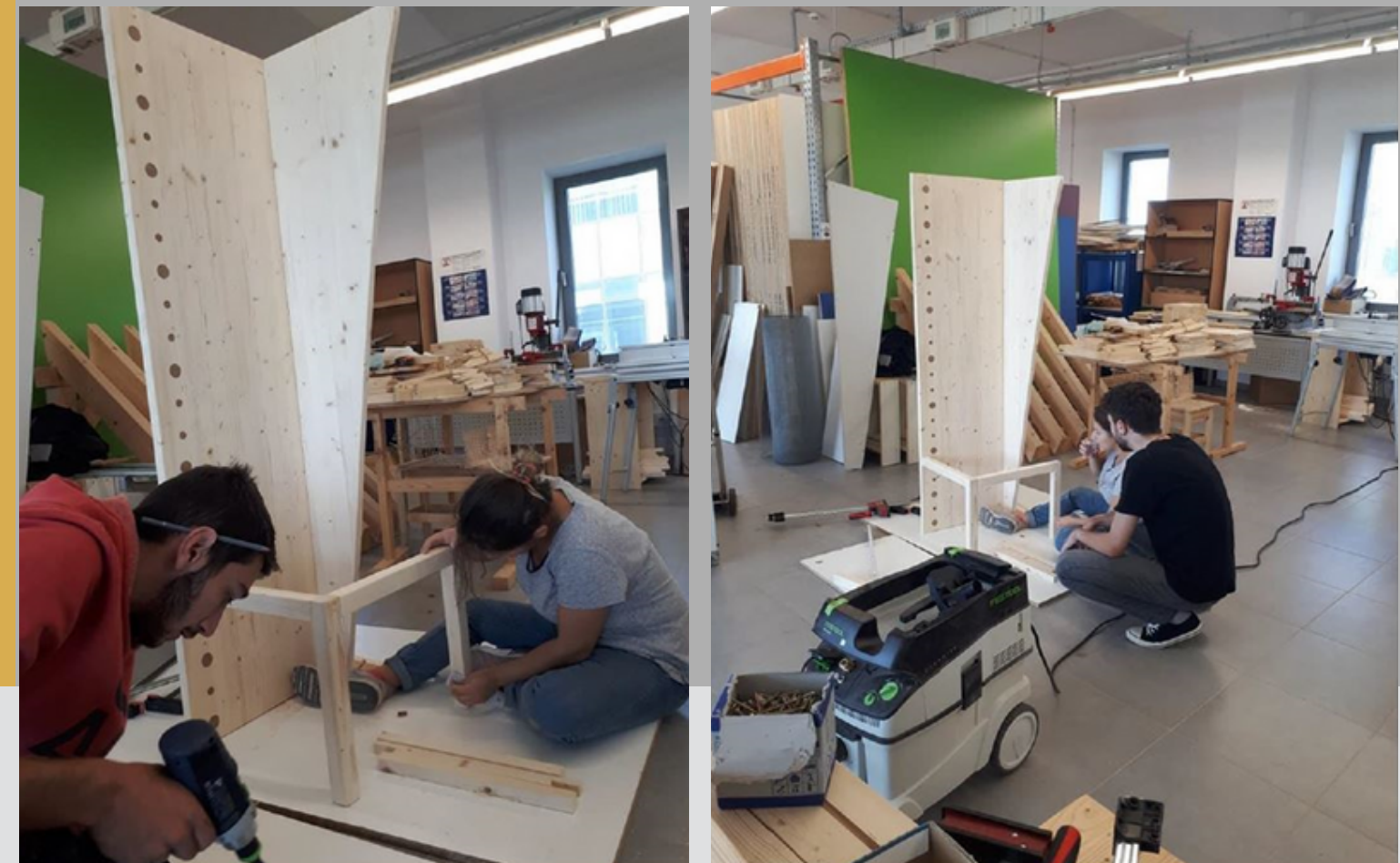
## Mission

### WOOD PROCESSING ENGINEERING

The mission of this study program is to train production engineers with grounded knowledge on various processing technologies related to timber, veneers, wood-based panels, wood wastes and their valorization for the manufacturing of furniture and other wood products, for wood constructions or energy. Accredited program, 4 years, 240 credits.

## Vision

“TECHNOLOGY, INNOVATION ENGINEERING APPLICATIONS”



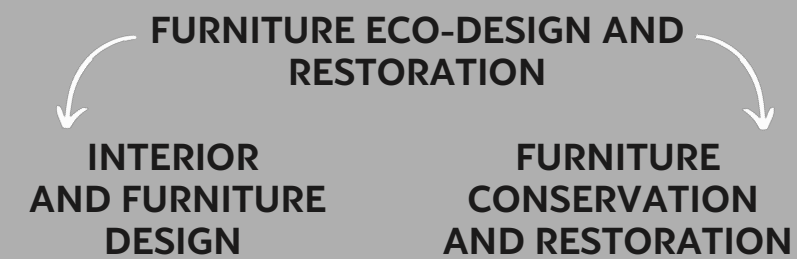
## Mission

### FURNITURE ECO-DESIGN AND RESTORATION

The mission of this study program is to qualify mature students for informed practice and research in the field of furniture and other wood products eco-design, eco-technologies, interior design and restoration. Accredited program, 2 years, 120 credits.

## Vision

"NEW TRENDS IN FURNITURE ECO-DESIGN AND RESTORATION"



## Mission

**ADVANCED WOODEN STRUCTURES AND INNOVATIVE TECHNOLOGIES**

The mission of this study program is to train specialists with advanced research skills in the field of lignin-cellulose composites, acoustic and heat-insulating materials, rigid and flexible structures for furniture and wood constructions and unconventional wood processing technologies. Accredited program, 2 years, 120 credits.

## Vision

"INNOVATIVE TECHNOLOGIES FOR FURNITURE AND WOOD PRODUCTS"



## Mission

### WOOD TECHNOLOGY IN CONSTRUCTION

The mission of this study program is to train specialists with advanced research skills in the field of wood constructions and the related materials and technologies. program under accreditation (2023), duration 2 years, 120 credits.

## Vision

"INNOVATIVE SOLUTIONS IN THE FIELD OF WOOD CONSTRUCTIONS"



## Mission

**FORESTRY ENGINEERING  
INDUSTRIAL ENGINEERING**

Preparing high qualified specialists with competences in fundamental and applicative research.

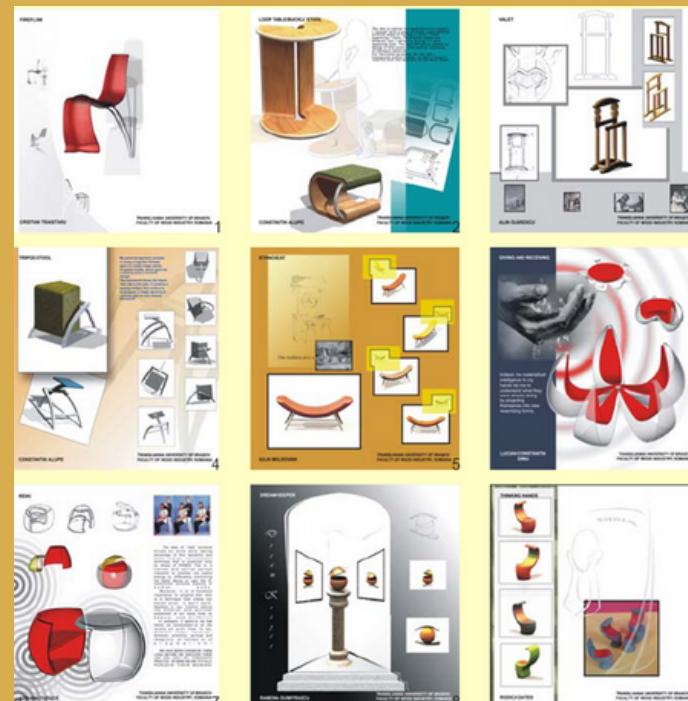
## Vision

"INNOVATIVE SOLUTIONS FOR INDUSTRY"



# Inventivity

2010



Furniture design projects

2018



*H Chair*, partnership with the History Museum Braşov

2019



Winning project, Ana Roşca

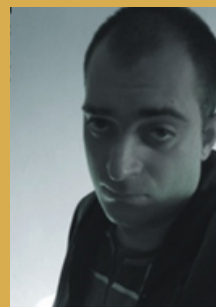
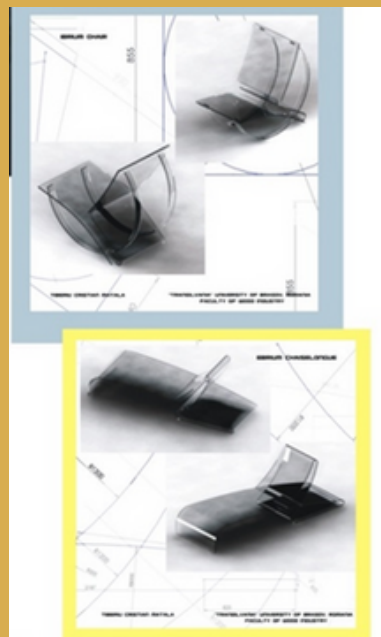
2022



*Waiting Roller*, Molnar Mihnea

# Inventivity

2009



2010



Vasile Călin Oltean

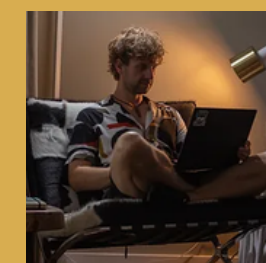
1st Prize, 2010, *Prophet* Chair

2018



Robert Niculescu

1st Prize National Furniture Design Competition

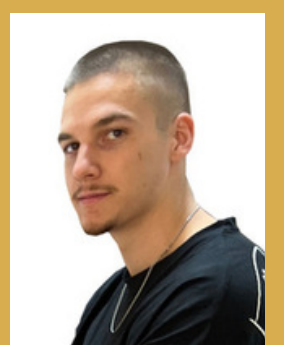


2022



Molnar Mihnea

1st Prize National Furniture Design Competition



# Ethnoverember

ETNOVEMBER is a multicultural ethno-medieval festival organized every year by the students of the Faculty of Wood Engineering together with the City Council of Gent since 1998. It includes exhibitions (architecture, design, photo, graphics), concerts, a Medieval Market at the Weaver's Bastion, a medieval procession with torches in the old streets of Brasov, a Marathon of poems, and many other events dedicated to the academic and city community.





FACULTY PROFILE PRESENTATION

# Restoration

Restoration Exhibitions are organized every year by the faculty with direct participation of the students in the conservation and restoration work, an action that combines science and art with human dedication.

# Research



DEPARTMENT  
OF WOOD PROCESSING  
AND WOOD PRODUCTS  
DESIGN

RESEARCH AT THE  
FACULTY OF WOOD  
ENGINEERING

FURNITURE ECO-DESIGN, RESTORATION AND  
CERTIFICATION IN WOOD INDUSTRY  
  
INNOVATIVE TECHNOLOGIES AND ADVANCED  
PRODUCTS IN WOOD INDUSTRY



# Research Center

## **FURNITURE ECO-DESIGN, RESTORATION AND CERTIFICATION IN WOOD INDUSTRY**

- Development of means and methods of monitoring environmental quality;
- Procedural certification of polluting factors in wood industry;
- Innovative methods of adding value to wasted forest resources;
- Development of innovative materials, processes and products for rehabilitation / restoration of wooden products with historic value, in order to preserve the cultural and historic heritage;
- Substantiation and development of innovative methods of modeling and optimization of eco-processes in wood industry;
- Development of highly qualified human resources, able to predict a vision of the future in the above mentioned areas.



# Research Center

## INNOVATIVE TECHNOLOGIES AND ADVANCED PRODUCTS IN WOOD INDUSTRY

- Studies for improvement of the thermal conductivity coefficient of various types of boards as: boards having a lignin-cellulose basic structure and synthetic, mineral or natural adhesives; composite panels with a lignin-cellulose basic structure and other materials (textiles, paper, plastic etc) glued with various adhesives; sandwich structures without insert elements; framed sandwich structures, insert elements and filling materials; various boards obtained by stratification and adhesives or other materials consolidation; complex structures with frames or other built-in materials; gypsum based complex structures, cement combined with other chopped materials or fibers; insulating materials (polystyrene, polyurethane foam etc), building materials (BCA, bricks etc); mineral wool
- testing the processing accuracy of wood panels and wooden based panels.

FDMIL



FACULTY PROFILE PRESENTATION



# PRO LIGNO

## Scientific Journal

PRO LIGNO - Open Access Scientific  
Journal in the Field of Wood Engineering –  
the only Romanian journal in this field  
Subject Category: Materials Science, Paper  
& Wood  
Edited by "PRO LIGNO" Foundation

This journal is indexed by:  
*CABI* (since 2011)  
*DOAJ* (since 2011)  
*EBSCO Publishing Ltd. Academic Search  
Complete* (since 2007)

Available at:  
<http://www.proligno.ro/en/index.htm>

# ICWSE

## **INTERNATIONAL CONFERENCE “WOOD SCIENCE AND ENGINEERING IN THE THIRD MILLENIUM”**

ICWSE is hosted every two years by the Faculty of Furniture Design and Wood Engineering and generally features paper and poster presentations.



# We look forward to welcome you in Braşov!



**Historical center of Braşov**  
History Museum



**Bran Castle**  
Bran County



**Bucegi Mountains**  
Prahova Valley



**Peleş Castle**  
Sinaia